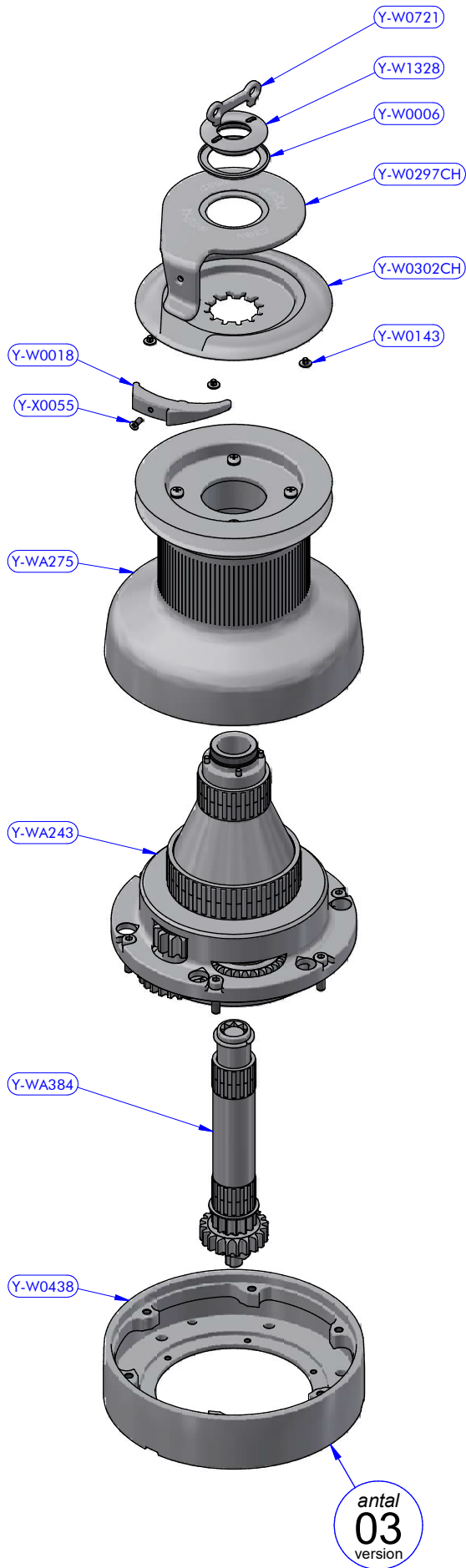
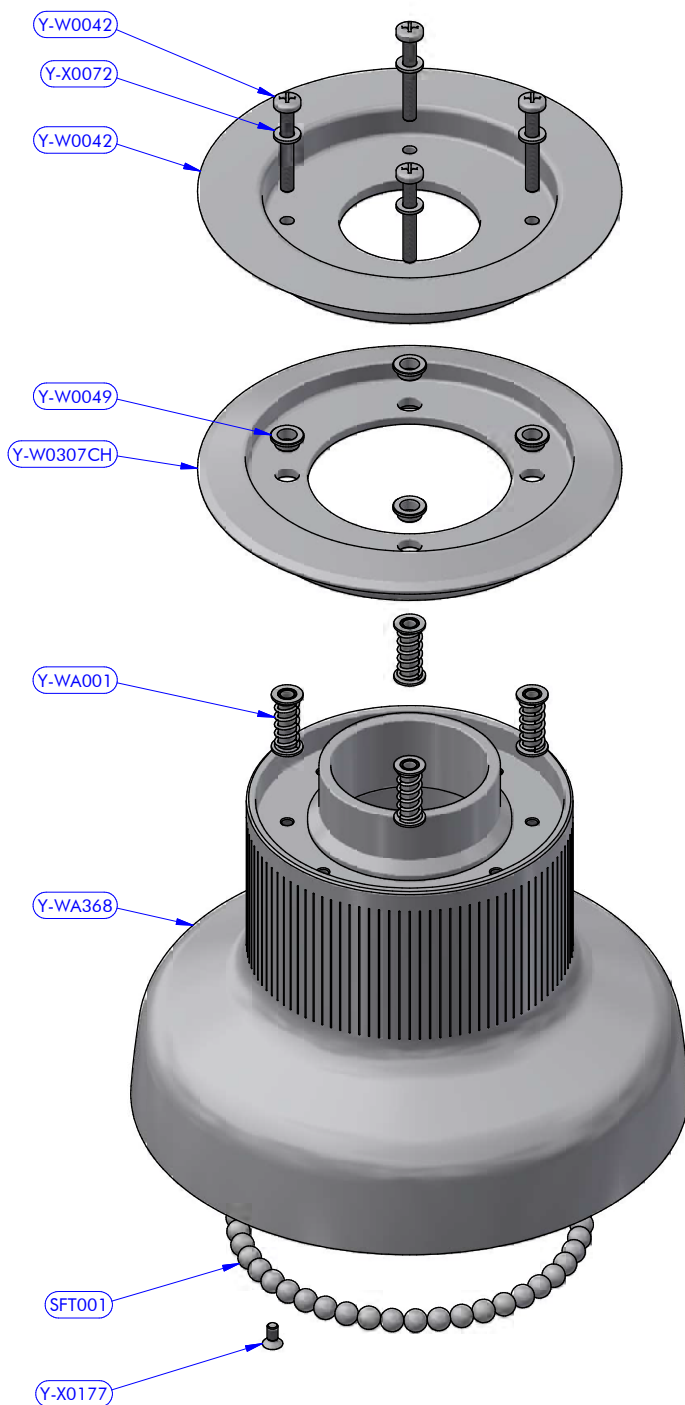


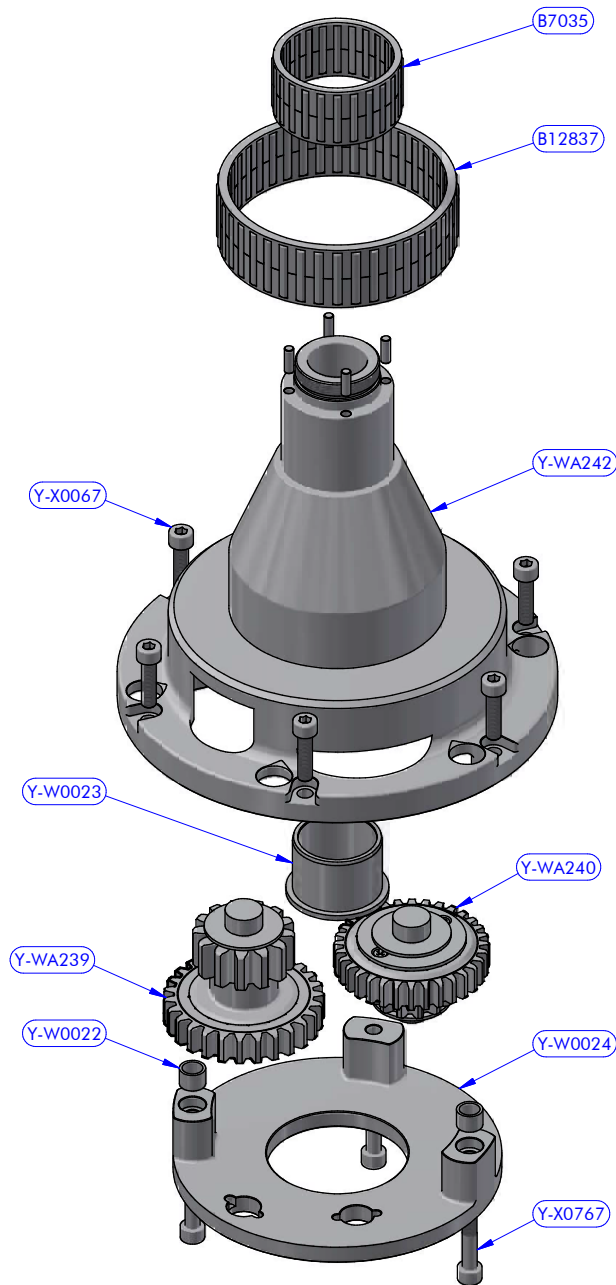
PART LIST			
CODE	DESCRIPTION	MATERIAL	Q.TY
XT66CHX	Winch	Various	1
Y-WA390	Hydraulic drive assy	Various	1



XT66CHX - PART LIST			
CODE	DESCRIPTION	MATERIAL	Q.TY
Y-W0006	Upper ring washer	Plastic	1
Y-W0018	Stripper	Plastic	1
Y-W0143	ST plug	Plastic	5
Y-W0297CH	Self-tailing arm	Chromed brass	1
Y-W0302CH	Upper disk	Chromed brass	1
Y-W0438	Skirt	Aluminium	1
Y-W0721	Opening tool	S.Steel	1
Y-W1328	Upper cap	S.Steel	1
Y-WA243	Base + Gears assy	Various	1
Y-WA275	Drum	Various	1
Y-WA384	Main shaft assy	Various	1
Y-X0055	Screw	S.Steel	1

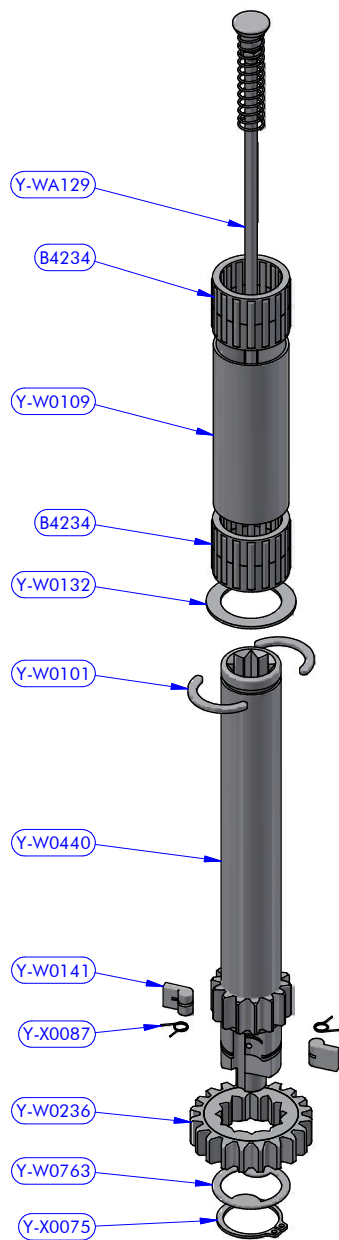


Y-WA275 - PART LIST			
CODE	DESCRIPTION	MATERIAL	Q.TY
SFT001	Torlon ball	Torlon	46
Y-W0042	ST central disk	Aluminium	1
Y-W0049	ST disk bush	Plastic	4
Y-W0307CH	ST lower disk	Chromed brass	1
Y-WA001	ST-spring assy	S.Steel	4
Y-WA368	Drum	Various	1
Y-X0071	Screw	S.Steel	4
Y-X0072	S.Steel washer	S.Steel	4
Y-X0177	Screw	S.Steel	1



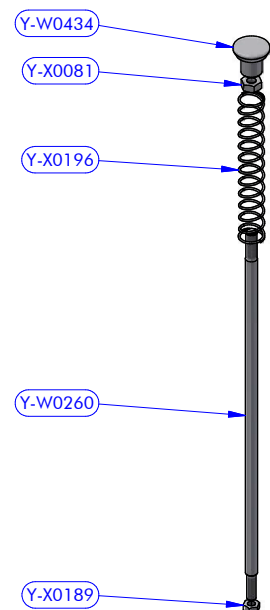
Y-WA243 - PART LIST

CODE	DESCRIPTION	MATERIAL	Q.TY
B7035	Roller bearing	Plastic / S.Steel	1
B12837	Roller bearing	Plastic / S.Steel	1
Y-W0022	Pipe spacer	S.Steel	2
Y-W0023	Bearing track	Plastic / S.Steel	1
Y-W0024	Gear base	Aluminium	1
Y-W1020	Cylinder pin	S.Steel	4
Y-WA239	Gears kit	Various	1
Y-WA240	Gears kit	Various	1
Y-WA242	Base + Stem	Various	1
Y-X0067	Screw	S.Steel	6
Y-X0767	Screw	S.Steel	3



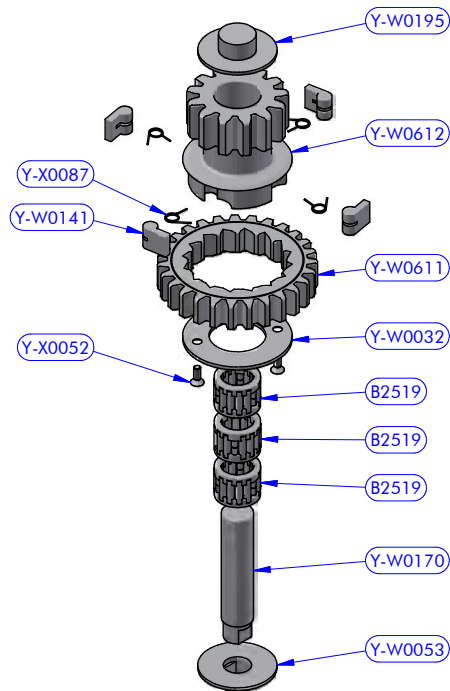
Y-WA384 - PART LIST

CODE	DESCRIPTION	MATERIAL	Q.TY
B4234	Roller bearing	Plastic / S.Steel	2
Y-W0101	Half-ring	Brass	2
Y-W0109	Pipe spacer	Plastic	1
Y-W0132	S.Steel washer	S.Steel	1
Y-W0141	Pawl	S.Steel	2
Y-W0236	Gear "A2"	Bronze	1
Y-W0440	Main shaft	S.Steel	1
Y-W0763	Special washer	S.Steel	1
Y-WA129	Disengagement rod kit	S.Steel	1
Y-X0075	Stop ring	S.Steel	1
Y-X0087	Torsion spring	S.Steel	2

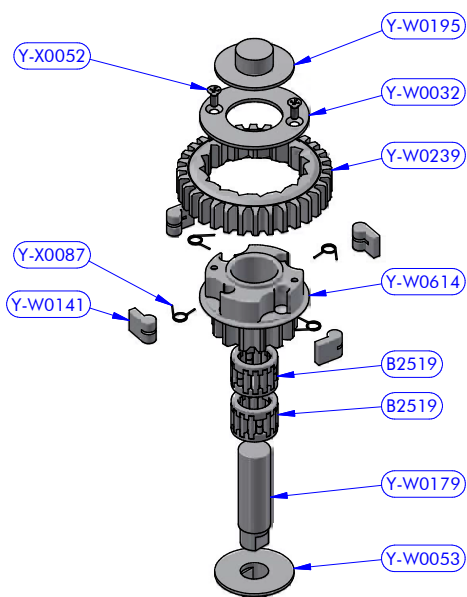


Y-WA129 - PART LIST

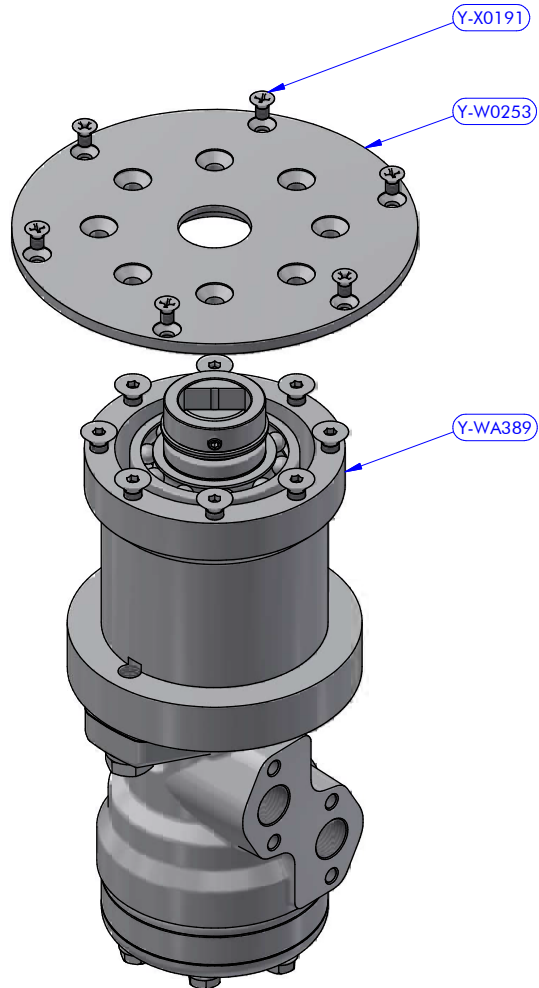
CODE	DESCRIPTION	MATERIAL	Q.TY
Y-W0260	Disengagement rod	S.Steel	1
Y-W0434	Disengagement rod head	S.Steel	1
Y-X0081	Standard nut	S.Steel	1
Y-X0189	Standard nut	S.Steel	1
Y-X0196	Compression spring	S.Steel	1



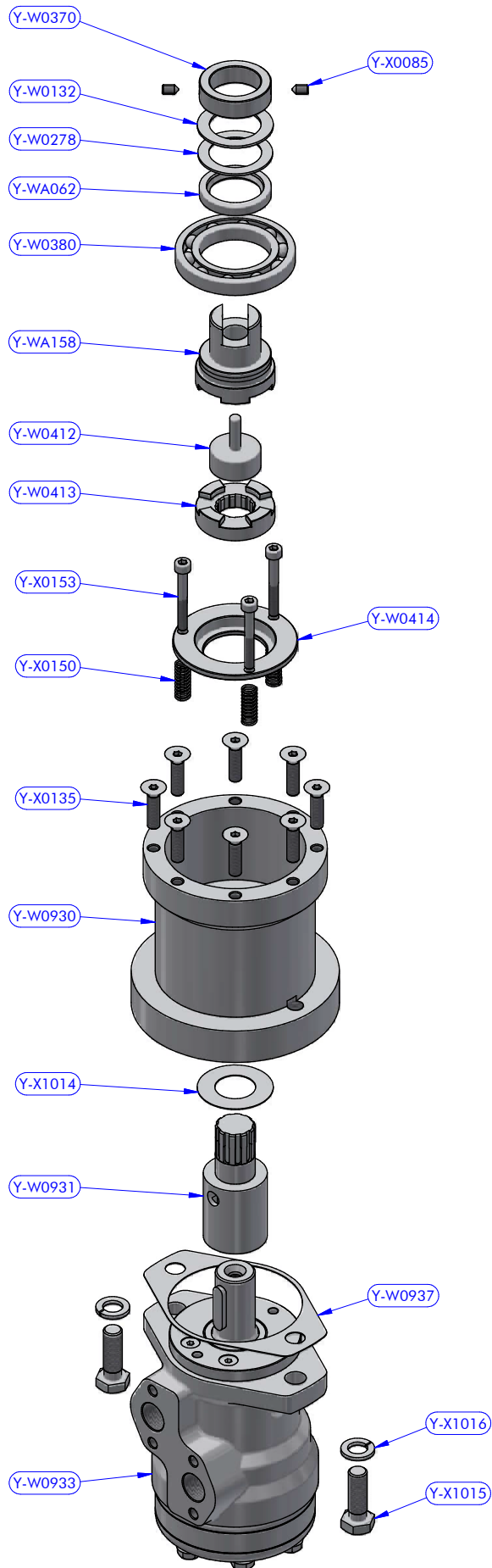
Y-WA239 - PART LIST			
CODE	DESCRIPTION	MATERIAL	Q.TY
B2519	Roller bearing	Plastic / S.Steel	3
Y-W0032	Gear ring	S.Steel	1
Y-W0053	Gear lower washer	Plastic	1
Y-W0141	Pawl	S.Steel	4
Y-W0170	Gear axis	S.Steel HR	1
Y-W0195	Gear upper washer	Plastic	1
Y-W0611	Gear "B1"	Bronze	1
Y-W0612	Gear "B2"	Bronze	1
Y-X0052	Screw	S.Steel	2
Y-X0087	Torsion spring	S.Steel	4



Y-WA240 - PART LIST			
CODE	DESCRIPTION	MATERIAL	Q.TY
B2519	Roller bearing	Plastic / S.Steel	2
Y-W0032	Gear ring	S.Steel	1
Y-W0053	Gear lower washer	Plastic	1
Y-W0141	Pawl	S.Steel	4
Y-W0179	Gear axis	S.Steel HR	1
Y-W0195	Gear upper washer	Plastic	1
Y-W0239	Gear "D1"	Bronze	1
Y-W0614	Gear "D2"	Bronze	1
Y-X0052	Screw	S.Steel	2
Y-X0087	Torsion spring	S.Steel	4



Y-WA390 - PART LIST			
CODE	DESCRIPTION	MATERIAL	Q.TY
Y-W0253	Skirt flange	Aluminium	1
Y-WA389	Hydraulic drive assy	Various	1
Y-X0191	Screw	S.Steel	6



Y-WA389 - PART LIST			
CODE	DESCRIPTION	MATERIAL	Q.TY
Y-W0132	S.Steel washer	S.Steel	1
Y-W0278	Resin washer	Resin	1
Y-W0370	Shaft connection	S.Steel	1
Y-W0380	Ball bearing	S.Steel	1
Y-W0412	Disengagement	Bronze	1
Y-W0413	Lower coupling	S.Steel	1
Y-W0414	Thrust ring	Bronze	1
Y-W0930	Disengagement box	Aluminium	1
Y-W0931	Gearbox socket	Bronze	1
Y-W0933	Hydraulic motor	Alu + S.Steel	1
Y-W0937	Motor gasket	Tufnol	1
Y-WA062	Packing ring	Rubber	1
Y-WA158	Upper coupling	Various	1
Y-X0085	Cone point set screw	S.Steel	2
Y-X0135	Screw	S.Steel	8
Y-X0150	Compression spring	S.Steel	3
Y-X0153	Screw	S.Steel	3
Y-X1014	C.F. washer	Tufnol	1
Y-X1015	Screw	S.Steel	2
Y-X1016	S.Steel washer	S.Steel	2